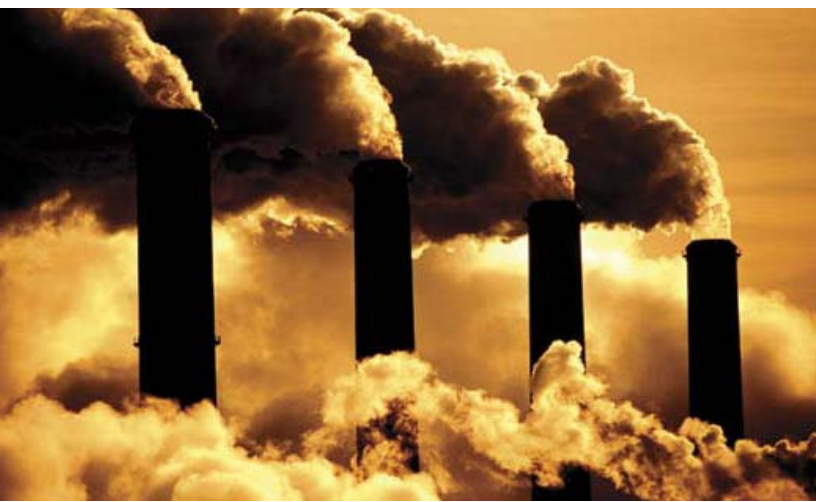


# TRAINING COURSE DIRECTORY 2012



**YOUR SAFETY IS  
OUR BUSINESS**



## Message from the President

2011 marked another milestone for NES, having traveled to eight countries providing emergency response training to various provincial and national agencies. Both this year (2011) and next year (2012) we are again slated to travel to Europe to provide these services for selected agencies.

As the 2011 economy passes, we have kept our 2012 pricing without any increases. We are improving the way our training services are hosted on our web site, and we are entering our first year at our new Bay Area facility in Pleasant Hill, California.

The company has taken on an expanded roll with the California Trucking Association (CTA) with administering their Storm water Pollution Prevention Program (SWPPP), and is expanding our consulting services in both Industrial Hygiene and Environmental/waste management.

NES will once again co-sponsor and provide the Hazardous Waste Classification Training and US DOT Training programs through the DTSC sponsored 14th Annual CUPA Forum in South San Francisco this year. As well as present at the 23rd Annual Continuing Challenge Hazardous Materials Workshops in September 2012.

NES is grateful for our clients' continued support and we look forward to serving your needs in the coming year.

## Training Excellence

NES has provided environmental, health and safety, and transportation-related training to industry and government clients since 1987. NES operates regional training centers in Folsom and in the Bay Area, and provides on-site training programs tailored to the specific needs of our clients through out the United States. Our scheduled training dates can also be accessed at our web site; [www.nesglobal.net](http://www.nesglobal.net)



# Quick Guide to Training

HAZWOP – 40 Hr .....	1
HAZWOP – 24 Hr .....	2
HAZWOP – 16 Hr .....	3
HAZWOP – 8 Hr Refresher .....	4
Supervisors of HazWaste Workers .....	5
Confined Space .....	6
Emergency Response First Responder Ops ...	7
Emergency Response HazMat Tech – 24 Hr ..	8
Incident Command – 8 Hr .....	9
Emergency Response Refresher .....	10
Title 22/RCRA Advanced HazWaste Mgmt. ...	11
Title 22/RCRA Basic HazWaste Mgmt. ....	12
U.S. DOT Advanced HazMat Employee .....	13
U.S. DOT Basic HazMat Employee .....	14
Uniform Hazardous Waste Manifest .....	15
IATA .....	16
Environmental Chemistry .....	17
California Training Navigator .....	18
Instructors .....	19
Customized Training Programs .....	22
Fit Testing Services.....	24
Consulting Services .....	26
Online Training .....	27
Registration Form .....	28

## Regional Training Center

1141 Sibley Street • Folsom, Ca. 95630  
Phone: (916) 353 – 2360 or (800) 637 – 2384  
Fax: (916) 353 – 2375

## Bay Area Regional Training Center

3478 Buskirk Ave •Pleasant Hill, Ca. 94523  
(800) 637 - 2384

Pleasant Hill location effective 3-1-11. For information regarding training at our Walnut Creek location, please contact NES at (916) 353 - 2360

# Hazardous Waste Operations (HAZWOP) – 40 Hr

## Who should attend

This course is designed for individuals involved in hazardous waste operations where a potential exposure to regulated hazards exist.

## Objectives

To prepare students to perform hazardous waste operations safely and in compliance with the OSHA Hazardous Waste Operations Standard. This course is for individuals working at hazardous waste sites (site workers). Contents of this course comply with 29 CFR 1910.120(e) and 8 CCR 5192(e) training requirements.

## Overview

Topics covered in the 40-hr HAZWOP course include chemical and physical hazard recognition, hazard controls, selection of personal protective equipment (PPE), air monitoring, respiratory protection, site control, decontamination, field-specific operations (drum handling, trenching and excavation, etc.) and an introduction to emergency response. Training includes classroom instruction tabletop exercises and a demonstration of PPE, monitoring and sampling equipment. Participants will receive a course handout, an electronic copy of the course manual, and a certificate of completion. Individuals who are medically evaluated and present a physician's written consent and bring their personal respirator, will receive a qualitative fit test free of charge. A quantitative fit test can be provided for an additional fee of \$35.

## Dates

Month	Folsom	Bay Area	Month	Folsom	Bay Area
January		<b>17-20</b>	July		<b>17-20</b>
February	13-17		August	6-10	
March		<b>6-9</b>	September		<b>11-14</b>
April	9-13		October	1-5	
May		<b>1-4</b>	November		<b>13-16</b>
June	4-8		December	10-14	

• **Highlighted dates indicate courses with 10-hr days**

## Fee

**\$699**

The regulations require 8 hours of annual refresher training for individuals who have received initial 40-hr training. NES offers a **lifetime discount of 50%** off our catalog price for the 8-hr refresher training to all students who received initial 40-hr training from NES. Discount does not apply to online refresher training.

# Hazardous Waste Operations (HAZWOP) – 24 Hr

## Who should attend

This course is for occasional waste-site workers working at fully characterized and monitored sites where exposure above established thresholds is not expected and air monitoring or use of respirators is not required.

## Objectives

To prepare students to perform limited hazardous waste operations tasks safely and in compliance with the OSHA Hazardous Waste Operations Standard. This course complies with 29 CFR 1910.120(e) and 8 CCR 5192(e) regulations.

## Overview

The topics covered in the 24-hr HAZWOP course include chemical and physical hazard recognition, hazard controls, selection of personal protective equipment, site control, decontamination, field-specific operations (drum handling, trenching and excavation, etc.) and an introduction to emergency response. Participants will receive a course handout, an electronic copy of the course manual, and a certificate of completion.

## Dates

Month	Folsom	Bay Area	Month	Folsom	Bay Area
January		17-19	July		17-20
February	13-15		August	6-10	
March		6-8	September		11-13
April	9-11		October	1-3	
May		1-3	November		13-15
June	4-6		December	10-12	

## Fee

**\$499**

The regulations require 8 hours of annual refresher training for individuals who have received initial 24-hr training. NES offers a **lifetime discount of 50%** off our catalog price for the 8-hr refresher training to all students who received initial 24-hr training from NES. Discount does not apply to online refresher training.

# Hazardous Waste Operations (HAZWOP) Supplemental –16 Hr

## Who should attend

Earn a 40-hr Certificate! This course supplements the 24-hr HAZWOP course to fulfill the 40-hr HAZWOP training requirements. This course is for individuals who become general site workers or who are required to wear respirators at hazardous work sites.

## Objectives

Contents of this course comply with 29 CFR 1910.120(e) regulations and 8 CCR 5192(e) and will fulfill the requirements for the 40-hr training when combined with the 24-hr HAZWOP.

## Overview

The topics covered in the 16-hr HAZWOP include air monitoring, respiratory protection, site control, sampling, field-specific operations and tabletop exercises and a demonstration of PPE, monitoring and sampling equipment. Participants will receive a course handout, an electronic copy of the course manual, and a certificate of completion. Individuals who are medically evaluated and present a physician's written consent and bring their personal respirator, will receive a qualitative fit test free of charge. A quantitative fit test can be provided for an additional fee of \$35.

## Dates

Month	Folsom	Bay Area	Month	Folsom	Bay Area
January		19-20	July		19-20
February	16-17		August	9-10	
March		8-9	September		13-14
April	12-13		October	4-5	
May		3-4	November		15-16
June	7-8		December	13-14	

## Fee

**\$329**



# Hazardous Waste Operations (HAZWOP) Refresher – 8 Hr

## Who should attend

Stay in compliance with 29 CFR 1910.120 and 8 CCR 5192 regulations with this annual refresher course. This 8-hr course provides a refreshing and fun alternative for maintaining proficiency.

## Objectives

To meet annual refresher training requirements of 29 CFR 1910.120(e) and 8 CCR 5192(e) for individuals working at hazardous waste clean-up sites.

## Overview

Updated yearly, topics include regulatory changes, protective clothing trends, expanded chemical hazards, field safety, respiratory protection changes, and revised hazard assessment techniques. This course meets the 29 CFR 1910.120(e) and 8 CCR 5192(e) OSHA refresher training requirement. Designed for individuals who successfully completed the 24 or 40-hr HAZWOP course and are looking to maintain proficiency and stay current with regulatory changes. Participants will receive a course handout, an electronic copy of the course manual, and a certificate of completion. Individuals who are medically evaluated and present a physician's written consent and bring their personal respirator, will receive a qualitative fit test free of charge. A quantitative fit test can be provided for an additional fee of \$35.

## Dates

Month	Folsom	Bay Area	Month	Folsom	Bay Area
January	10		July	11	
February	2	22	August	20	14
March	13		September	18	
April	17	25	October	17	9
May	15		November	6	
June	19	12,	December	18	4

Fee **\$199**

## Online Training Available – \$129

NES has partnered with EMAssist (EMA) to produce this interactive, online learning experience. NES/EMA's online refresher course lets you pick the time and place to complete the coursework required to renew HAZWOP training. For more information or to register please call (916) 353 – 2360 or 800 – NES – ADVISE or register at <https://nes.emassist.com/home/nas.aspx>

# Supervisors of Hazardous Waste Workers – 8 Hr

## Who should attend

This course is required for individuals who supervise or manage hazardous waste site workers and hazardous waste site operations. This course satisfies the 8-hrs of specialized training required by 29 CFR 1910.120(e) and 8 CCR 5192(e) for supervisors of hazardous waste workers. On-site supervisors and workers must first complete either the 40-hr or 24-hr HAZWOP course, depending on site conditions.

## Objectives

To train supervisors overseeing hazardous waste operations by reviewing regulations, training topics, field safety skills, and OSHA regulatory requirements affecting supervisor responsibilities. This course complies with 29 CFR 1910.120(e) and 8 CCR 5192(e) training requirements.

## Overview

Course topics include supervisor responsibilities, safety management, site safety plans, accident investigation, job hazard analysis, regulations, safety meetings, and site emergency response actions, personal protective equipment (PPE), respiratory protection and emergency response procedures. Training consists of classroom instruction and table top exercises. Participants will receive a course handout, an electronic copy of the course manual, and a certificate of completion.

## Dates

Month	Folsom	Bay Area
April		24
November	5	

## Fee

**\$249**



# Confined Space Training – 4 Hr (8am –12pm)

## Who should attend

Personnel who may be required to enter or work around confined spaces within the scope of their job duties.

## Objectives

Participants learn to recognize confined spaces, confined space entry hazards, permit required confined spaces, OSHA regulations, field operations, and emergency procedures.

## Overview

This is a 4-hr course that complies with 8 CCR 5156, 5157, 5158 awareness training requirements. Participants will receive a course handout, an electronic copy of the course manual, and a certificate of completion.

## Dates

Month	Folsom	Bay Area
February		23
July	10	

## Fee

**\$139**



## Discounts

Receive a group discount when you prepay, (cash, check or credit card only) and enroll students for any course on the same training date:

- **3 – 5 students will receive 5% discount**
- **6 – 10 Students will receive 10%**
- **11 or more please call for details**

# Emergency Response First Responder Operations – 8 Hr

## Who should attend

Employees who are responsible for taking interim measures to contain or control releases or potential threats of a release. These employees will only take defensive measures to contain a release and are not responsible for stopping releases.

## Objectives

Employees learn defensive actions that could be taken to control or contain a release or potential releases in order to protect people, the environment and property.

## Overview

This 8-hr course focuses on defensive techniques used to contain and control a chemical release. Course meets 29 CFR 1910.120(q) and 8 CCR 5192(q) training requirements for First Responders at the Operations level. Training will include basic hazard and risk assessment techniques, PPE, basic hazardous materials terms, basic defensive measures, and basic decontamination. Participants will receive a course handout, an electronic copy of the course manual, Emergency Response Guidebook, and a certificate of completion.

## Dates

Month	Folsom	Bay Area
March	19	
August		21

## Fee

**\$249**



# Emergency Response HazMat Technician – 24 Hr

## Who should attend

This course is for workers who under 29 CFR 1910.120(q) and 8 CCR 5192(q) are responsible for stopping chemical releases.

## Objectives

To prepare students to perform basic chemical emergency response operations safely within the OSHA Hazardous Waste Operations and Emergency Response Standard.

## Overview

This course covers planning and executing emergency response actions, includes an emergency response overview, initial incident procedures, emergency response operations, incident safety, scene assessment, response hazards, principles of personal safety, and information on response agencies. This course is applicable to most industrial facilities, contractor personnel and public agency workers who respond to spills for the purpose of stopping the release. Training includes classroom instruction tabletop exercises and a demonstration of PPE, monitoring and sampling equipment. Participants will receive a course handout, an electronic copy of the course manual, Emergency Response Guidebook, and a certificate of completion.

## Dates

Month	Folsom	Bay Area
March	19-21	
August		21-23

## Fee

**\$529**



# Incident Command – 8 Hr

## Who should attend

This course is designed for personnel responsible for planning and directing emergency response actions. This additional training is useful for all students whose job duties involve any aspect of spill response scene management.

## Objectives

To prepare students who will be responsible for scene management at a chemical release. Course will give students the tools to implement the incident command system, emergency response plan, proper use of personal protective equipment, and decontamination procedures.

## Overview

This course introduces students to the Incident Command System, scene operations, agency logistics, principles of leadership, California SEMS, incident priorities, and field decision making. To attend this course, competency in the First Responders Operations level is required. Participants will receive a course handout, an electronic copy of the course manual, Emergency Response Guidebook, and a certificate of completion.

## Dates

Month	Folsom	Bay Area
March	22	
August		24

## Fee

**\$249**



# Emergency Response Refresher – 8 Hr

## Who should attend

Emergency Responders to stay in compliance with 29 CFR 1910.120(q) and 8 CCR 5192(q) refresher training requirements. This 8-hr course provides a refreshing and fun alternative for maintaining proficiency.

## Objectives

To provide refresher training for students who have successfully completed initial Emergency Response training. Course covers responding safely to chemical emergencies by reviewing key training topics, reviewing critical safety skills and presenting any new HazMat procedures and information. Meets annual refresher for Emergency Responders required under 29 CFR 1910.120(q) and 8 CCR 5192(q).

## Overview

This course provides an annual refresher for Emergency Responders required under 29 CFR 1910.120(q) & 8 CCR 5192(q) regulations. Course topics include chemical and physical hazards review, PPE, field safety, response actions, reporting requirements, and chemical handling. Emphasis is placed on problem solving, field operations safety, decision-making, and incident logistics. Participants will receive a course handout, an electronic copy of the course manual, Emergency Response Guidebook, and a certificate of completion.

## Dates

Month	Folsom	Bay Area
March	1	
August		15

## Fee

**\$199**



# Title 22/RCRA Advanced Hazardous Waste Management – 16 Hr

## Who should attend

Employees and supervisors responsible for managing hazardous waste. This advanced course is a must if you generate, handle, transport, store, treat or dispose of hazardous wastes in California.

## Objectives

Provide an understanding of the California hazardous waste management requirements for generators of hazardous waste. This course also includes selected DOT requirements that pertain to hazardous waste transportation. Training complies with 22 CCR 66265.16 & 40 CFR 262.34 (except training on your facility Contingency Plan) training requirements.

## Overview

This two-day Title 22/RCRA compliance course is our most thorough hazardous waste management program. The course covers record keeping and general management requirements, the Uniform Hazardous Waste Manifest System, identification and classification for federally and state-regulated hazardous waste, container management, Land Disposal Restrictions (LDR), Tiered Permitting, SB14, the Unified Program and U.S. DOT regulations affecting hazardous waste generators in California. Participants will receive a comprehensive course manual, and a certificate of completion.

## Dates

Month	Folsom	Bay Area
February	27-28	
June		13-14
September	19-20	

## Fee

**\$499**

Yearly refresher training is required by regulations. NES offers the refresher course, Title 22/RCRA Basic Hazardous Waste Management, at a 15% discount to students that have taken Title 22/RCRA Advanced Training through NES. The discount does not apply to on-line training.

# Title 22/RCRA Basic Hazardous Waste Management – 8 Hr

## Who should attend

Employees who generate hazardous waste as part of their job duties and personnel who have previously received Title 22/RCRA Advanced training.

## Objectives

The course meets both federal and state initial and annual refresher requirements for trained facility and generator personnel. The course is updated annually, reviewing fundamental practices and updating students on new regulatory requirements.

## Overview

This course gives a general understanding of the basics of hazardous waste management. The course covers record keeping and management, tiered permitting, container and tank management requirements, hazardous waste shipping requirements, LDRs, on-site treatment and more! Participants will receive a course manual and a certificate of completion.

## Dates

Month	Folsom	Bay Area
April	18	
August		16
November	7	

## Fee

**\$249**

NES offers a 15% to students that have taken Title 22/RCRA Advanced Training through NES. The discount does not apply to on-line training.

## Online Training Available – \$99

NES's online refresher course lets you pick the time and place to complete the coursework required to comply with Title 22 requirements. For more information or to register please call (916) 353 – 2360 or 800 – NES – ADVISE or visit our web site at [www.nesglobal.net](http://www.nesglobal.net)

*THIS ONLINE COURSE NOW AVAILABLE IN **SPANISH***

# U.S. DOT Advanced Hazardous Materials Employee – 16 Hr

## Who should attend

This course is for employees who prepare and ship hazardous materials and hazardous waste, including those who prepare or sign Uniform Hazardous Waste Manifests.

## Objectives

This course complies with 49 CFR 172.704 training requirements for initial DOT Haz Mat training for employees who prepare and ship hazardous materials and hazardous waste, including those who prepare or sign Uniform Hazardous Waste Manifests.

## Overview

This course provides general awareness and familiarization of the hazardous materials transportation regulations, thorough review of hazardous materials table, classification of hazardous materials emergency response requirements, preparation of shipping papers (including Uniform Hazardous Waste Manifests), marking, labeling, and placarding and UN specification packaging requirements. Additional function-specific training may be needed to fully comply with 49 CFR 172.704 requirements for those who load hazardous materials or who operate a vehicle transporting hazardous materials. Participants will receive a course manual, an Emergency Response Guidebook, a Hazardous Materials Compliance Pocket Guide and a certificate of completion.

## Dates

Month	Folsom	Bay Area
July	12-13	

## Fee

**\$499**

## Online Training Available – \$99

NES's online refresher course lets you pick the time and place to complete the coursework required to renew DOT Haz Mat training. For more information or to register please call (916) 353 – 2360 or our toll-free number 800 – NES – ADVISE or visit our web site at [www.nesglobal.net](http://www.nesglobal.net)

*THIS ONLINE COURSE NOW AVAILABLE IN SPANISH*

# U.S. DOT Basic Hazardous Materials Employee – 8 Hr

## Who Should Attend

This course is for employees who prepare and ship hazardous materials and hazardous waste, including those who prepare and sign Uniform Hazardous Waste Manifests. This course is also for DOT Haz Mat employees who have successfully completed and initial DOT Haz Mat Employee training course and need the three-year refresher training or want to update their training and knowledge of new transportation requirement changes.

## Objectives

This course complies with 49 CFR 172.704 training requirements for initial and refresher DOT Haz Mat training for employees who prepare and ship hazardous materials and hazardous waste, including those who prepare or sign Uniform Hazardous Waste Manifests.

## Overview

This course provides general awareness and familiarization of the hazardous materials transportation regulations, hazardous materials table, emergency response requirements, preparation of shipping papers (including Uniform Hazardous Waste Manifests), marking, labeling, and placarding. Additional function-specific training may be needed to fully comply with 49 CFR 172.704 requirements for those who load hazardous materials. Participants will receive a course handout, an electronic copy of the course manual, an Emergency Response Guidebook, a Hazardous Materials Compliance Pocket Guide, and a certificate of completion.

## Dates

Month	Folsom	Bay Area
January	23	
March		15
May	16	
September		25
November	8	

## Fee

**\$249**



# Uniform Hazardous Waste Manifest – 8 Hr

## Who should attend

The course is strongly recommended for personnel who prepare manifests or sign manifests/shipping papers prepared by others. Prerequisites: Students must have completed their initial DOT Hazardous Material Employee training and should also have completed a Title 22/RCRA Training course.

## Objectives

This course provides an overview of the hazardous waste manifest system and instruction on proper completion of the Uniform Hazardous Waste Manifest. Course covers the federal manifest form. The course fulfills the function-specific training needed to comply with 49 CFR 172.704 for employees who prepare and ship hazardous waste by commercial carriers. Compliance with DOT and RCRA/Title 22 requires preparers and/or signers of manifests to complete their U.S. DOT Haz Mat Employee (general awareness) and should complete a Hazardous Waste Generator (Title 22/RCRA training).

## Overview

Course includes an overview of the hazardous waste manifest system and completion of the Federal Uniform Hazardous Waste Manifest. Program meets the function-specific training requirements for shipping papers as listed in 49 CFR 172.704, as well as supplement HazWaste Training requirements (for those who complete and/or sign the manifest). Participants will receive a course handout, an electronic copy of the course manual, Emergency Response Guidebook, Hazardous Materials Compliance Pocket Guide, Federal and State Waste Codes, instructions for completing a manifest form, and a certificate of completion.

## Dates

---

<b>Month</b>	Folsom	Bay Area
January	24	
March		16
May	17	
September		26
November	9	

## Fee

**\$249**

# International Air Transportation Association (IATA) – 8 Hr

## Who should attend

Ground handling agencies, freight forwarders, shippers of dangerous goods and agencies engaged in security screening.

## Objectives

To provide direction on preparing and packaging dangerous goods for shipment via air.

## Overview

This 8-hr program covers the recurrent (2 year) training requirements mandated by IATA Dangerous Goods Regulations and prepared for ground handling agencies, freight forwarders, shippers of dangerous goods and agencies engaged in security screening. Each year IATA makes changes, including additions and cancellations to the existing previous editions that are highlighted in this program. Participants will receive a course manual and certificate of completion.

## Dates

Month	Folsom	Bay Area
January	12	
July	16	

## Fee

**\$249**



# Environmental Chemistry – 8 Hr

## Who should attend

Personnel who are responsible for waste characterization and classification of hazardous waste streams.

## Objectives

This course will cover basic chemical concepts, hazardous properties of chemicals, waste classification, listed hazardous waste and characteristic hazardous waste.

## Overview

This course provides an overview of the environmental and analytical chemistry of hazardous substances and wastes. Training will cover basic chemistry concepts and in-depth classification and characterization of hazardous waste. Participants will receive a comprehensive course manual and a certificate of completion.

## Dates

Month	Folsom	Bay Area
January	11	
August		17

## Fee

**\$249**



## Customized On-Site Training Available

Call 800 – NES – ADVISE ( 800 – 637 – 2384)  
or email us at [office@nesglobal.net](mailto:office@nesglobal.net)

## California Training Navigator

Only 118 Safety & HazMat training regulations. Do you know which ones apply to you?

### Call NOW

(916) 353 – 2360 or 800 – 637 – 2384 for assistance or information about your training needs.

#### **FREE Compliance Training Navigator**

It's not easy keeping track of all the OSHA, EPA, and DOT training regulations that apply to your business. Complying with the regulations is important for your employees safety, and for your bottom-line, but trying to go through several thousand pages of state and federal safety and HazMat regulations to figure out all of the training you need isn't easy! In fact, the number one frustration most employers have about compliance training is knowing which training regulations apply to their operation. That's why we developed our **FREE** California Training Navigator. With a few minutes at our web site, [www.nesglobal.net](http://www.nesglobal.net), you can easily identify major safety and HazMat training requirements that apply to your operation and employees. Our California Training Navigator will find the training regulations that apply to you. We want this to be a useful tool for owners, managers, and employees alike. So once you're registered – which is free – you can visit the Navigator any time you need a quick answer about the training regulations that might apply to you!

### Just the Facts

- 2 Training Facilities
- Over 100 Calendar dates for 12 essential courses
- \$80,000 of hands-on equipment inventory
- 10 Degreed Professional Trainers on staff
- 150,000 hours combined classroom experience
- 25 open enrollment & on-site training programs
- All courses available on-site, any time, any place

### Why Our Customers Come Back

We work closely with our customers to do what makes sense to achieve cost-effective compliance with health, safety and environmental regulations. When we train your staff, we make sure that participants get the information they need in a practical and engaging manner that equips them to do their job properly and safely. Whether we are providing consulting services or delivering training, our goal is to help you protect your employees, the environment, and your bottom line.

## Instructors

### John Boll REA, CPEA

Mr. Boll has over 30 years of experience in Environmental Health and Safety consulting. He has managed responses to hazardous material releases throughout the United States, and has provided hazardous materials training to various industries. Mr. Boll is known nationally for his auditing expertise in health, safety & environmental compliance audits, and environmental management system audits. He has extensive experience in environmental assessments, chemical risk management plans, process safety management, environmental program development, and plant closures.

### Richard Bohrer

Mr. Bohrer has over 30 years of experience in the fields of, industrial hygiene, radiation safety, laser safety, medical surveillance, safety management, substance abuse, chemical safety programs and training and management of Health and Safety professionals. Mr. Bohrer's additional project experience includes construction management, California Department of Transportation seismic retrofit projects, indoor air quality, ergonomics, mining construction, and manufacturing site health and safety reviews, and international projects.

### Jerry Bucklin CHMM, REA, CEA, REM, CEI, CEC

Mr. Bucklin has 30 years of extensive emergency response, hazardous material and hazardous waste management experience and is a principal instructor for NES' DOT, hazardous waste, HAZWOPER and other OSHA safety courses. Mr. Bucklin is also a nationally recognized expert in Hazardous Waste Management and Clandestine Laboratory Safety, having trained over 49,000 environmental management and law enforcement personnel across the United States and internationally.

## Instructors

### David Durst MS, CIH, CSP, CAC, CPEA

Mr. Durst has provided Industrial Hygiene consultation services to the regulated community for 30 years. These services have included IAQ investigations, mold assessments and H & S program development. Mr. Durst is a principal instructor in Clandestine Laboratory Safety and a variety of OSHA–mandated programs.

### Steve Reichow

Mr. Reichow has over 13 years of experience in hazardous waste management and transportation issues. He has extensive knowledge of characterizing, profiling, manifesting, transporting, and treating hazardous waste. Mr. Reichow gained this experience while working as an Environmental Lab Pack Chemist at a local TSDf, and overseeing field operations for an Environmental Emergency Response Contractor.

### Don Rothenbaum REA, CPEA

Mr. Rothenbaum has 33 years of experience in environmental compliance, remediation and management training, specializing in hazardous waste management and HAZWOPER. Mr. Rothenbaum is a principal instructor for Hazardous Waste Management and Clandestine Laboratory Safety, having presented over 150 courses across the United States and internationally.

### Steve Smith

Mr. Smith has worked in the heavy construction and environmental fields for over 20 years. As founding Cochairman of the Northern California Teamster Apprenticeship Program (NCTAT), he was responsible for training over 10,000 workers in accordance DOT, EPA, and OSHA training programs.



## Earl Thomas

Mr. Thomas is an Environmental Waste Consultant and Training Associate, bringing 29 years of progressive experience to NES's elite team of environmental professionals. Mr. Thomas began his career as an emergency responder, a "Class A" Hazardous Waste Hauler, and a lead Environmental Waste Technologist. Mr. Thomas provided technical and managerial support to the Lawrence Livermore National Laboratory's Environmental Protection Department in multiple capacities for 13 years. Mr. Thomas authored several regulatory guidance documents; hosted and conducted environmental audits; routinely interfaced with local, State, and Federal regulators; and has been the recipient of numerous awards for his achievements in the environmental waste management field. He also has extensive knowledge of IATA and DOT regulations.

## Mark Trask

Mr. Trask is a Certified Hazardous Materials Specialist. He formerly worked as CUPA inspector for the County of Sacramento. He has over 14 years of experience in HazMat Emergency response, hazardous waste management, industrial hygiene and occupational safety.

### On-Site Training

NES can provide any of our offered training programs at your facility. Programs can also be developed specific to your operation.

Call 800 – NES – ADVISE (800 – 637 – 2384)  
or email us at [office@nesglobal.net](mailto:office@nesglobal.net)



## Customized Training Programs

Some training is more effective when delivered at your facility and tailored to your specific company needs. Certain EPA, DOT and OSHA required training programs do not have mandated time frames. A customized training program allows companies to combine selected courses and topics specific to their needs and time limitations. Courses can be structured so that some employees attend portions of the training program that only apply to them. Other training NES provides at your client facility include:

### Asbestos Awareness

NES provides OSHA Class IV Asbestos Awareness Training for compliance with Cal/OSHA standards for training of maintenance workers, as well as other employees who may occasionally encounter or work in the vicinity of asbestos.

### Naturally Occurring Asbestos (NOA) Awareness Training

NES provides awareness level training for construction workers, contractors, surveyors, landscapers, and other personnel who may perform work in areas with NOA. The course covers how to recognize NOA, potential health threats, methods of controlling exposure and dust mitigation plans, and regulatory requirements for construction work in areas with NOA.

### TSDF and Household HazWaste Collection Facility HAZWOPER

HAZWOPER training requirements for permitted Treatment, Storage, and Disposal and Household HazWaste Collection Facilities are set forth under CCR 5192, section (p). The standard applies to all permitted facilities in California, and it also applies to Household Hazardous Waste Collection facilities.

### Hazardous Waste Classification

This course is for employees who profile and manifest hazardous waste and those who want to learn more about identifying and classifying hazardous waste. Both federal (RCRA) and state (non – RCRA) classification systems are covered.

### Spill Prevention Control and Countermeasures (SPCC) Training

This course satisfies Cal – OSHA First Responder Operations Level, U.S. EPA oil and California APSA petroleum spill response training requirements with focus on implementing a facility's SPCC Plan.

# Customized Training Programs

## Hazard Communication

Comprehensively addresses both evaluating and communicating chemical hazards to employees to comply with 29 CFR 1910.1200 and 8 CCR 5194 training requirements.

## Permit-Required Confined Space

This course covers confined space entry hazards, OSHA regulations, employer program requirements, field operations, and emergency procedures, with an emphasis on non-entry rescue. Topics include operations overview, ventilation procedures, OSHA standards for permit entry, air testing, entry hazards review, entry permit programs, confined space job planning, emergency rescue plans, field operations, gas detection, isolation procedures, and respirator requirements.

## Environmental Auditing

This one-day course introduces auditing to EH & S professionals and those interested in conducting effective audits. The course covers the do's and don'ts and the 7 Cardinal Rules of audit reports, and provides suggestions for writing proper findings and reporting conclusions. Students are encouraged to attend the Fundamentals of Hazardous Waste Management and be familiar with environmental regulations.

## Tailored HAZWOPER Courses for Public Agencies

NES can present an 8-hr HAZWOP course at your facility or ours that covers topics relevant to your area or specialty. This training can include such topics as clandestine laboratory safety, weapons of mass destruction, field inspection safety, or any other issues you may face as a public agency.

## Lock-Out/Tag-Out (LOTO)

This overview course covers OSHA/Cal – OSHA regulations, how to evaluate a LOTO situation, the types of energy that can be involved, and basic guidelines for establishing a LOTO program.



## Advanced Emergency Response Refresher Training and Evaluation

This course is designed for company ER Teams where effective response is of critical importance due to types or quantities of chemicals used or the location of the facility near sensitive receptors. NES offers on-site refresher training for your ER Team using a combination of a classroom review and an on-site spill drill. The drill is developed with the client and is designed to reflect a potential site-specific release. An experienced NES instructor critiques the drill and provides helpful suggestions for improving future response actions.



## Storm Water Pollution Prevention

This course is designed for the members of the Storm Water Pollution Prevention Team and employees. Employees will be trained on site-specific best management practices (BMPs) developed to prevent pollution of storm water discharges. Members and managers of the Storm Water Pollution Prevention Team will focus on preparation of the Storm Water Pollution Prevention Plan, BMP selection and implementation, visual monitoring, sampling techniques, and annual report preparation.



## Qualitative & Quantitative Fit Testing Services



With over 20 years of experience in the Environmental Health and Safety (EH&S) field, NES is a solution oriented leader in the environmental industry. Our EH&S professionals are dedicated to helping clients with their Occupational Safety and Health Administration (OSHA) Respiratory Protection Program Standard Compliance. NES now offers the convenience of both Qualitative and Quantitative Fit Testing.

Unlike Qualitative Fit Testing, Quantitative Fit Testing determines a fit factor by measuring and comparing concentrations of a challenge agent inside and outside the respirator. The Quantitative Fit Test allows the wearer to take full advantage of the respirator's Assigned Protection Factor.

Annual respirator fit testing and training is mandated by OSHA for employees required to use respiratory protection equipment. Qualitative Fit Testing is provided to our 8-hr, 24-hr, & 40-hr HAZWOP students at no charge. Quantitative Fit Testing is offered for an additional fee of \$35. Please call NES at 916 – 353 – 2360 to schedule a fit testing appointment or for information on pricing, volume discounts, and on-site fit testing.



## Did You Know?

In addition to being a nationally recognized leader in environmental, occupational health, and safety training, *NES* also provides Environmental Health and Safety Consulting Services.

## Environmental Health and Safety

- Asbestos building inspections, abatement management and clearance air sampling.
- Air monitoring and training related to construction work in areas with Naturally Occurring Asbestos (NOA).
- Indoor Air Quality (IAQ) assessments.
- Employee exposure monitoring for a variety of occupational contaminants for determination of appropriate Personal Protection Equipment (PPE) and for OSHA compliance.
- Occupational health & safety program development, auditing & training.
- Mold/water damage assessments and remediation oversight.
- Clandestine Drug Laboratory assessments and remediation work plan development.
- Job safety analysis and hazard assessments, including noise exposure assessments.
- Risk Management Plans and RMP audits.
- Process Safety Management Plan development and related consulting.
- Compliance Management Services including initial set-up of in-house environmental management systems, and ongoing compliance support, guidance and training.
- Hazardous Materials and Waste Management procedures, compliance manuals, and waste characterization.
- Storm Water Pollution Prevention Plans (SWPPP), permitting, and training.
- Spill Prevention Control & Countermeasures Plan (SPCC) and training.
- Environmental site assessment and compliance reviews.
- Hazardous Materials Business Plans (HMBP), Emergency Response Plans, Consolidated Contingency Plans.
- Hazardous Waste Minimization and Source Reduction (SB14) Plans.
- Phase II soil and ground water sampling and investigations.
- Other environmental permitting, such as air emissions permitting, hazardous waste treatment storage and disposal (TSD) facility tiered permitting, and temporary wastewater discharge permitting.

## Online Training – Courses Available

- HAZWOP Refresher – **\$129**

NES has partnered with EM-Assist to produce this interactive, on-line learning experience. Register at: <https://nes.emassist.com/home/nes.aspx>

- U.S. DOT Hazmat Employee – **\$99**

*English/Spanish*

- Hazardous Waste Generator Basic and Refresher – **\$99** *English/Spanish*

NES's online refresher courses let you pick the time and place to complete coursework required to renew HAZWOP certification, DOT material certification, and HAZWASTE generator certification.

### Audience

Participating students to be selected by client. Students must be computer literate to navigate through the on-line course.

### Duration

A password and instructions are emailed to each student within 24 hours after registering for this course. The course materials must be completed within 30 days after which the account will become deactivated. This course is self paced as the student advances through the modules on their own.

### Facilities

Students must have access to an email address and internet access at the facility where they wish to complete the on-line course.

**To register online visit our website: [www.nesglobal.net](http://www.nesglobal.net)**



## TO REGISTER

**BY PHONE:** 1 – 800 – 637 – 2384 or (916) 353 – 2360

**BY FAX:** (916) 353 – 2375

**ONLINE:** [www.nesglobal.net](http://www.nesglobal.net)

### MAIL TO:

Registrar,  
NES  
1141 Sibley Street  
Folsom, California 95630

Course Name \_\_\_\_\_ Date \_\_\_\_\_ Fee \_\_\_\_\_

### Student Information

Student Name: \_\_\_\_\_

Company: \_\_\_\_\_

Address: \_\_\_\_\_

City: \_\_\_\_\_ State: \_\_\_\_\_ Zip: \_\_\_\_\_

Telephone: \_\_\_\_\_ FAX: \_\_\_\_\_

Email: \_\_\_\_\_

### Billing Information (if different from student info)

Company: \_\_\_\_\_

Address: \_\_\_\_\_

City: \_\_\_\_\_ State: \_\_\_\_\_ Zip: \_\_\_\_\_

Telephone: \_\_\_\_\_ FAX: \_\_\_\_\_

Your company training manager's name and phone (if different):  
\_\_\_\_\_

### How did you hear about NES:

\_\_\_\_\_

## Payment Method

Check enclosed       Will send check.

(Must be received 7 days before course to guarantee registration)

Charge to \_\_\_\_\_ American Express \_\_\_\_\_ MasterCard \_\_\_\_\_ VISA \_\_\_\_\_

Card No.: \_\_\_\_\_ Exp. Date: \_\_\_\_\_

Card Signature/ CVC Code: \_\_\_\_\_

You may qualify for a discount if you have taken certain courses with NES before. Please ask for details when registering. All certificates will be mailed to the student at the above indicated address unless otherwise stated at time of registration.

## Payment Terms & Cancellations\*

You may designate another person to take your place at any time. Cancellations received seven (7) working days before the first day of the course will receive a 100% refund. Cancellations made six (6) working days before the course will be subject to a 20% application fee. If no notification is received, there will be a 50% fee. There is no fee to reschedule to a later course. **Payment must be received prior to the course.** NES, Inc., reserves the right to cancel any course without advance notice or to refuse an application for registration for any course due to over-enrollment, circumstances beyond its control, or for any other reason. In the unlikely event of course cancellation, NES' entire liability shall be limited to refund of the course registration fee.

**\* We reserve the right to withhold certificates of completion if payment is not received prior to completion of course.**



1141 Sibley Street  
Folsom, CA 95630  
(916) 353 – 2360 or 800 – NES – ADVISE  
Fax (916) 353 – 2375  
[www.nesglobal.net](http://www.nesglobal.net)

## **Satisfaction Guaranteed**

NES guarantees 100% satisfaction with the training you receive. If you are not satisfied with one of our courses, just tell us why in a brief letter, and we will credit your tuition toward another NES course of equal or lesser value.